

MASTER YARN CHART

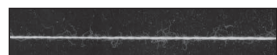
Copyright *Handwoven*® magazine, F+W Media Inc., 2014.
Not to be reprinted. All rights reserved.

This list includes all the yarns that have been used in *Handwoven* magazine projects since 2000. Numbers indicate yards per pound, meters per kilogram, and a range of setts—from wide as for lace weaves, medium as for plain weave, and close as for twills (no setts are given for yarns not suitable for use as warp). Use this chart to identify yarns and make appropriate substitutions for yarns that are no longer available.

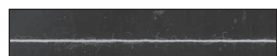
COTTON



Size 60 sewing thread; 24,000 yd/lb (48,340 m/kg); 36, 48, 60



40/2 pearl cotton; 16,800 yd/lb (33,900 m/kg); 36, 48, 60



50/3 sewing thread; 14,000 yd/lb (28,250 m/kg); 36, 48, 60



30/2 unmercerized cotton; 11,055 yd/lb (22,300 m/kg); 30, 45, 54



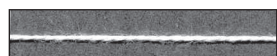
20/2 pearl cotton; 8,400 yd/lb (16,950 m/kg); 30, 36, 48



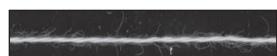
20/2 unmercerized cotton; 8,400 yd/lb (16,950 m/kg); 30, 36, 48



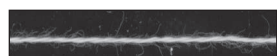
80% cotton, 20% silk (Lace Yarn) 8,100 yd/lb (16,344 m/kg) 425 yd/skein; 30, 36, 48



2-ply organic unmercerized cotton (Ecocot); 7,000 yd/lb (14,120 m/kg); 30, 32, 40



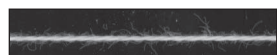
16/2 pearl cotton; 6,720 yd/lb (13,560 m/kg); 24, 30, 36



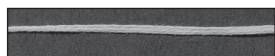
16/2 unmercerized cotton; 6,720 yd/lb (13,560 m/kg); 24, 30, 36



14/2 cotton; 5,880 yd/lb (11,865 m/kg); 24, 28, 32



12/2 pearl cotton; 5,040 yd/lb (10,170 m/kg); 20, 24, 30



100% cotton (Gima); 4,240 yd/lb (8,555 m/kg); 15, 20, 24



10/2 pearl cotton; 4,200 yd/lb (8,475 m/kg); 20, 24, 28



10/2 unmercerized cotton; 4,200 yd/lb (8,470 m/kg); 20, 24, 28



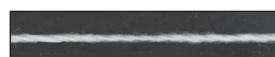
Embroidery floss (Caron Wildflower) 4,000 yd/lb (8,060 m/kg); 20, 24, 28



3-ply size 20 crochet cotton; 3,800 yd/lb (7,650 m/kg); 16, 20, 24



Cotton slub; 3,750 yd/lb (7,520 m/kg); 18, 20, 24



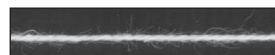
8/2 pearl cotton; 3,360 yd/lb (6,775 m/kg); 16, 20, 24



8/2 unmercerized cotton; 3,360 yd/lb (6,775 m/kg); 16, 20, 24



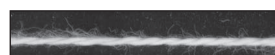
8/2 cottolin (50% cotton, 50% linen or 60% cotton, 40% linen); 3,360 yd/lb (1,397 m/kg); 15, 20, 24



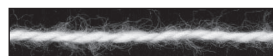
22/2 cottolin (50% cotton, 50% linen); 3,170 yd/lb (6,390 m/kg) 15, 20, 24



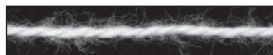
3-ply #10 crochet cotton; 3,050 yd/lb (6,155 m/kg); 16, 20, 24



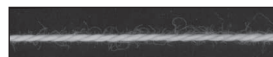
6/2 unmercerized cotton; 2,520 yd/lb (5,080 m/kg); 14, 18, 24



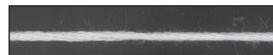
5/2 pearl cotton; 2,100 yd/lb (4,238 m/kg); 12, 16, 18



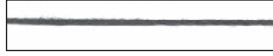
5/2 unmercerized cotton; 2,100 yd/lb (4,238 m/kg); 12, 16, 18



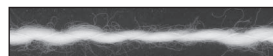
DMC Perle Cotton #5 (2-ply); 2,100 yd/lb (4,238 m/kg); 12, 16, 18



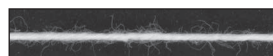
6-strand cotton embroidery floss 2,100 yd/lb (4,238 m/kg); 12, 16, 18



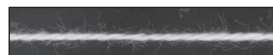
80% cotton, 20% wool (Cotton Fine); 2,000 yd/lb (4,040 m/kg); 12, 15, 20



Cotton novelty (Casco Bay) 2,000 yd/lb (4,035 m/kg)



8/4 cotton carpet warp; 1,680 yd/lb (3,390 m/kg); 10, 15, 18



8/4 soft-twist cotton; 1,680 yd/lb (3,390 m/kg); 10, 15, 18



8/4 pearl cotton; 1,680 yd/lb (3,390 m/kg); 10, 15, 18



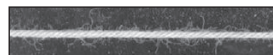
4/2 unmercerized cotton; 1,680 yd/lb (3,390 m/kg); 10, 15, 18



Cotton novelty (Snowflake); 1,500 yd/lb (3,025 m/kg); 10, 14, 18



Cotton chenille; 1,450 yd/lb (2,926 m/kg); 12, 15, 18



12/6 cotton rug warp; 1,450 yd/lb (2,925 m/kg); 10, 14, 16



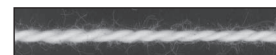
12/6 cotton; 1,430 yd/lb (2,925 m/kg); 10, 14, 16



100% organic cotton (Pakucho) 1,375 yd/lb (2,775 m/kg); 10, 12, 15



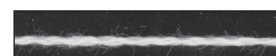
Cotton flake (Noho); 1,320 yd/lb (2,665 m/kg); 10, 14, 16



3/2 pearl cotton; 1,260 yd/lb (2,442 m/kg); 10, 14, 16



3/2 organic cotton; 1,260 yd/lb (2,442 m/kg); 10, 14, 16



6/2/2 cotton; 1,260 yd/lb (2,442 m/kg); 10, 12, 15



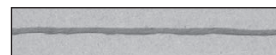
Cotton novelty (Truffles) 1,200 yd/lb (2,420 m/kg)



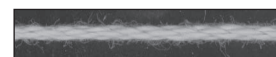
DK-weight cotton (Yeoman); 1,186 yd/lb (2,390 m/kg); 10, 12, 15



2-ply combed cotton (Monte Cristo II); 1,150 yd/lb (2,320 m/kg) 10, 12, 14



10-ply cotton (Enzo Lucci); 1,140 yd/lb (2,298 m/kg); 10, 12, 14



Cabled cotton; 1,116 yd/lb (2,252 m/kg); 10, 12, 14



Z-twist 4-ply cotton cord 1,050 yd/lb (2,120 m/kg); 8, 10, 12



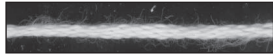
12-strand Egyptian cotton; 1,040 yd/lb (2,100 m/kg); 10, 12, 14



8-ply cotton (Nashua Natural Focus Ecologie); 1,005 yd/lb (110 yd/50 g); 6, 8, 10



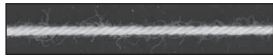
Cotton bouclé; 1,000 yd/lb (2,010 m/kg); 10, 12, 15



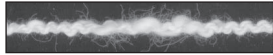
10-ply cotton (Tahki); 980 yd/lb (1,980 m/kg); 6, 8, 10



Novelty cotton (Cathy); 950 yd/lb (1,920 m/kg); 6, 8, 10



12/9 cotton seine twine; 925 yd/lb (1,865 m/kg); 6, 8, 10



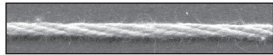
Novelty cotton (Serenity); 918 yd/lb (1,852 m/kg); 6, 8, 10



Cotton chenille; 890 yd/lb (1,796 m/kg); 6, 8, 10



Worsted-weight cotton; 850 yd/lb (1,715 m/kg); 6, 8, 10



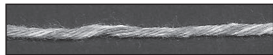
8/8 unmercerized cotton; 840 yd/lb (1,695 m/kg); 6, 8, 10



4-ply (4/4) cotton; 840 yd/lb (1,695 m/kg); 6, 8, 10



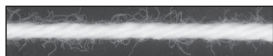
Cabled cotton; 839 yd/lb (1,693 m/kg); 6, 8, 10



75% recycled cotton, 25% acrylic 825 yd/lb (1,664 m/kg)



4/4 cotton; 800 yd/lb (1,615 m/kg); 4, 6, 8



Worsted-weight cotton; 755 yd/lb (1,520 m/kg); 6, 8, 10



1/16" piping cord



10-ply cotton (Sand Cotton) 700 yd/lb (1,412 m/kg); 4, 6, 8



8/8/2 mop cotton; 420 yd/lb (846 m/kg); 4, 6, 8



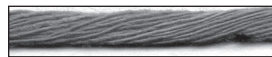
8-ply (8/16) mop cotton 420 yd/lb (848 m/kg)



4/8 cotton (Repp Filler); 384 yd/lb (775 m/kg); 4, 6, 8



4-ply cotton cord; 260 yd/lb (525 m/kg)



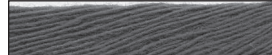
Cotton string yarn (Midi) 244 yd/lb (495 m/kg)



4-ply mop cotton; 170 yd/lb (340 m/kg)



3-ply cotton rug filler 150 yd/lb (302 m/kg)



Cotton string yarn (Maxi) 123 yd/lb (250 m/kg)



8-ply mop cotton; 85 yd/lb (170 m/kg)

WOOL, ALPACA, MOHAIR, CASHMERE, YAK (QIVIUT), etc.



Wool crepe (overtwist) 15,040 yd/lb (30,350 m/kg)



Z-twist wool crepe (overtwist) 12,000 yd/lb (24,216 m/kg)



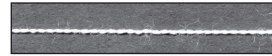
48/2 wool; 11,840 yd/lb (23,875 m/kg); 30, 40, 60



2-ply overtwisted merino wool 9,000 yd/lb (18,160 m/kg) 24, 30, 36; (56/2 TEX)



36/2 wool; 8,950 yd/lb (18,025 m/kg); 24, 36, 45



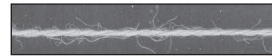
28/2 wool; 6,880 yd/lb (13,885 m/kg); 24, 36, 45



2-ply wool; 6,464 yd/lb (13,000 m/kg); 24, 28, 36



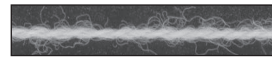
24/2 wool; 5,960 yd/lb (12,005 m/kg); 20, 24, 30



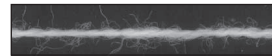
20/2 wool; 5,600 yd/lb (11,300 m/kg); 20, 24, 30



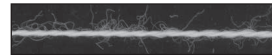
50% wool, 50% silk; 5,400 yd/lb (10,890 m/kg); 20, 25, 30



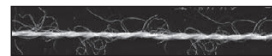
18/2 merino wool; 5,040 yd/lb (10,170 m/kg); 20, 24, 30



18/2 wool/silk; 5,040 yd/lb (10,170 m/kg); 20, 24, 30



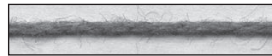
2-ply merino wool; 4,800 yd/lb (9,685 m/kg); 16, 20, 24



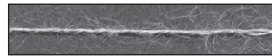
2-ply wool (Mora); 4,700 yd/lb (9,467 m/kg); 16, 20, 24



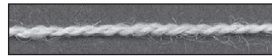
50% alpaca, 50% Tencel; 4,200 yd/lb (8,475 m/kg); 20, 24, 28



60% alpaca, 40% cotton (Serena) 4,200 yd/lb (8,475 m/kg); 20, 24, 28



70% kid mohair, 30% silk (Kid Seta) 4,181 yd/lb (8,445 m/kg); 20, 24, 28



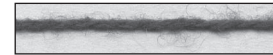
70% alpaca, 30% silk; 4,169 yd/lb (8,420 m/kg); 20, 24, 28



2-ply cashmere (Still River Mill) 3,657 yd/lb (7,330 m/kg); 12, 15, 18



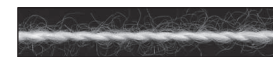
Singles wool (Pendleton); 3,600 yd/lb (7,265 m/kg); 16, 20, 24



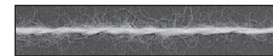
45% cashmere, 55% silk; 3,320 yd/lb (6,700 m/kg); 15, 18, 24



Singles wool (Fårö); 3,100 yd/lb (6,244 m/kg); 15, 18, 20



2-ply angora; 3,000 yd/lb (6,042 m/kg); 15, 18, 20



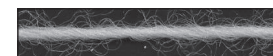
2-ply laceweight alpaca; 2,800 yd/lb (5,650 m/kg); 12, 16, 20



80% alpaca, 20% bamboo (Forever Lace); 3,000 yd/lb (6,042 m/kg); 15, 18, 20



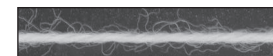
52% bamboo, 43% superwash merino, 5% silk; 3,000 yd/lb; 12, 15, 18



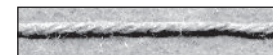
Wool roving; 2,976 yd/lb (6,000 m/kg); 12, 15, 20



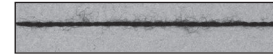
100% wool (Nature Spun Fingering) 2,840 yd/lb (5,505 m/kg); 12, 16, 20



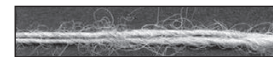
2-ply fingering-weight wool; 2,800 yd/lb (5,650 m/kg); 15, 18, 20



3-ply fingering-weight wool; 2,800 yd/lb (5,650 m/kg); 15, 18, 20



10/2 merino/Tencel (Colrain Lace); 2,800 yd/lb (5,645 m/kg); 15, 18, 20.



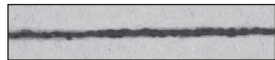
Handspun doubled alpaca; 2,600 yd/lb (5,212 m/kg); 12, 15, 20



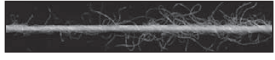
3-ply organic merino; 2,600 yd/lb (5,040 m/kg); 12, 16, 20



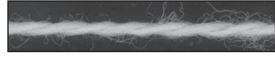
3-ply fingering-weight wool; 2,560 yd/lb (5,160 m/kg); 10, 12, 15



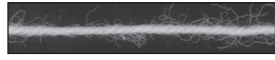
Wool crepe (Silk City Deluxe); 2,250 yd/lb (4,505 m/kg); 10, 12, 15



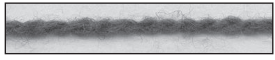
Singles wool; 2,240 yd/lb (4,490 m/kg); 12, 15, 20



8/2 wool; 2,240 yd/lb (4,520 m/kg); 12, 15, 20



12/3 worsted wool; 2,160 yd/lb (4,350 m/kg); 12, 15, 20



65% wool, 35% camel down; 2,100 yd/lb (4,238 m/kg); 12, 15, 20



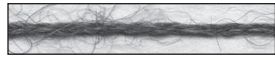
2-ply wool (Peruvian Highland); 2,112 yd/lb (4,234 m/kg); 18, 20, 24



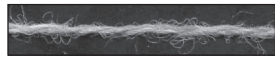
70% wool, 30% nylon singles (Noro Kureyon Sock Yarn); 2,066 yd/lb (4,170 m/kg); 16, 20, 24



Fingering-weight superwash wool (Fortissima); 2,060 yd/lb (4,160 m/kg); 12, 15, 20



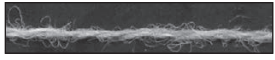
11/3 alpaca; 2,053 yd/lb (4,140 m/kg); 10, 12, 15



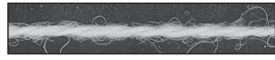
2-ply wool; 1,988 yd/lb (4,020 m/kg); 16, 20, 24



7/2 wool (Bockens, Borgs, or Klippans); 1,960 yd/lb (4,210 m/kg); 12, 15, 20



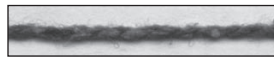
2-ply fingering-weight alpaca; 1,920 yd/lb (3,860 m/kg); 16, 20, 24



2-ply wool (Harrisville Shetland); 1,800 yd/lb (3,630 m/kg); 12, 15, 20



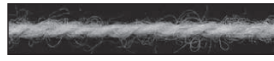
2-ply Hebridean wool; 1,800 yd/lb (3,630 m/kg); 12, 15, 20



45% wool, 35% silk, 20% nylon (Silky Wool); 1,750 yd/lb (3,530 m/kg); 10, 12, 15



65% merino, 30% silk, 5% nylon; 1,750 yd/lb (3,532 m/kg); 10, 12, 16



7/2 wool; 1,735 yd/lb (3,500 m/kg); 10, 12, 15



90% superwash merino, 10% nylon sock yarn; 1,635 yd/lb (3,280 m/kg); 10, 15, 20



Merino bouclé; 1,635 yd/lb (3,296 m/kg); 10, 12, 15



Wool singles; 1,600 yd/lb (3,210 m/kg); 10, 12, 15



6/2 wool; 1,600 yd/lb (3,225 m/kg); 8, 10, 12



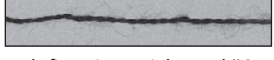
70% alpaca, 30% soysilk; 1,600 yd/lb (3,225 m/kg); 8, 10, 12



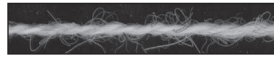
2-ply sport-weight wool (Imperial); 1,580 yd/lb (3,185 m/kg); 8, 10, 12



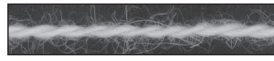
2-ply 100% wool (Rauma Prydvevgarn); 1,497 yd/lb (3,020 m/kg); 8, 10, 12



2-ply fingering-weight wool (Maggie's farm); 1,500 yd/lb (3,024 m/kg); 10, 12, 15



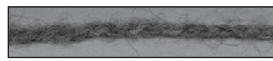
2-ply wool; 1,488 yd/lb (3,000 m/kg); 10, 12, 15



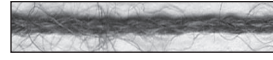
2-ply wool (50% spelsau, 50% luster); 1,488 yd/lb (3,000 m/kg); 10, 12, 15



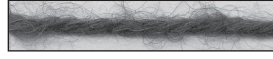
2-ply wool; 1,475 yd/lb (2,950 m/kg); 10, 12, 15



2-ply sport-weight wool (Meridian Jacobs); 1,390 yd/lb (2,802 m/kg); 6, 8, 10



3-ply alpaca; 1,330 yd/lb (2,680 m/kg); 8, 10, 12



50% alpaca, 50% wool; 1,315 yd/lb (2,654 m/kg); 6, 8, 10



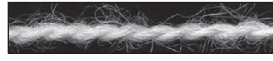
4-ply alpaca; 1,300 yd/lb (2,625 m/kg); 8, 10, 12



9/4 worsted wool; 1,260 yd/lb (2,542 m/kg); 10, 12, 15



3-ply wool (Limbo); 1,234 yd/lb (2,490 m/kg); 10, 12, 15



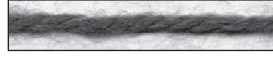
2-ply alpaca (North Brook Farm); 1,225 yd/lb (2,455 m/kg); 10, 12, 15



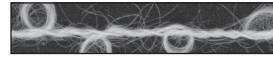
3-ply alpaca; 1,190 yd/lb (2,399 m/kg); 10, 12, 15



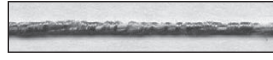
Sport-weight alpaca; 1,179 yd/lb (2,377 m/kg); 10, 12, 15



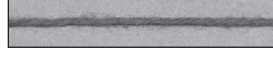
3-ply alpaca (North Brook Farm); 1,175 yd/lb (2,355 m/kg); 10, 12, 15



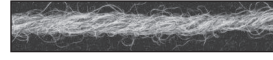
Wool bouclé (Victorian, Halcyon Yarn); 1,175 yd/lb (2,370 m/kg); 6, 8, 10



47% rayon, 25% linen, 17% silk (Seduce); 1,150 yd/lb (2,320 m/kg); 10, 15, 20



8/4 wool/silk; 1,120 yd/lb (2,258 m/kg); 10, 12, 15



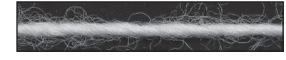
100% wool (Nature Spun Worsted); 1,120 yd/lb (2,170 m/kg); 6, 8, 10



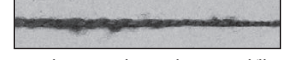
3-ply merino wool; 1,120 yd/lb (2,260 m/kg); 8, 10, 12



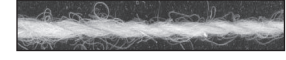
4-ply wool (Montana); 1,120 yd/lb (2,260 m/kg); 6, 8, 10



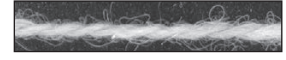
Navajo Wool Warp; 1,120 yd/lb (2,260 m/kg); 6, 8, 10



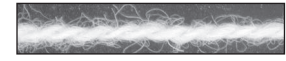
Handspun 2-ply wool; 1,025 yd/lb (2,066 m/kg); 10, 12, 15



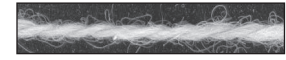
2-ply wool (Cascade 220); 1,006 yd/lb (2,060 m/kg); 10, 12, 15



2-ply wool; 1,100 yd/lb (2,240 m/kg); 6, 8, 10



2-ply wool; 1,090 yd/lb (2,200 m/kg); 10, 12, 15



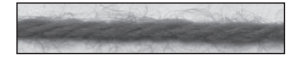
2-ply woolen-spun wool (Crown Colony); 1,040 yd/lb (2,100 m/kg); 10, 12, 15



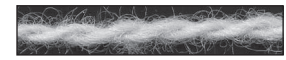
3-ply merino wool (Gems Opal, Louet); 1,028 yd/lb (2,070 m/kg); 8, 10, 12



50% alpaca, 50% soy; 1,000 yd/lb (416 m/kg); 10, 12, 15



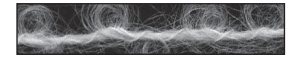
4-ply alpaca; 1,000 yd/lb (2,018 m/kg); 8, 10, 12



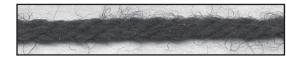
2-ply rug yarn (80% wool, 20% cotton, by Jason Collingwood); 1,000 yd/lb (2,010 m/kg); 6, 8, 10



Merino wool singles (Loft); 990 yd/lb (1,995 m/kg); 4, 6, 8



Merino bouclé; 980 yd/lb (1,975 m/kg)



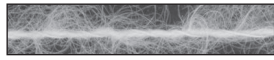
4-ply 100% wool (Telemark); 941 yd/lb (103 yd/50 g ball); 6, 8, 10



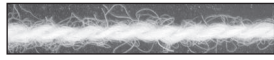
2-ply 50% buffalo, 50% alpaca (Lonesome Stone Natural Fiber Mill); 900 yd/lb (1,804 m/kg); 6, 8, 10



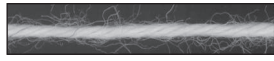
2-ply wool (Harrisville Highland)
900 yd/lb (1,816 m/kg); 6, 8, 10



Mohair; 900 yd/lb (1,816 m/kg)
8, 10, 12



2-ply worsted wool; 880 yd/lb
(1,774 m/kg); 6, 8, 10



4-ply wool rug warp; 868 yd/lb
(1,752 m/kg); 4, 8, 10



3-ply wool; 841 yd/lb (1,698 m/kg)
4, 8, 10



70% mohair, 30% wool (Lamb's
Pride Handpaint Originals); 804 yd/lb
(1,620 m/kg); 6, 8, 10



2-ply wool (Bartlettyarns Maine
Wool); 800 yd/lb (1,605 m/kg)
6, 8, 10



4-ply sock yarn (75% wool, 25%
nylon); 800 yd/lb



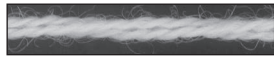
85% wool, 15% mohair (Lamb's
Pride Worsted); 760 yd/lb (1,535
m/kg); 6, 8, 10



3-ply wool (Rugby, Wilde Yarns)
720 yd/lb (1,450 m/kg); 6, 8, 10



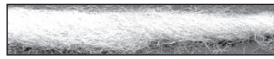
4-ply wool (Lincoln Longwool)
700 yd/lb (1,752 m/kg); 4, 8, 10



Persian rug wool (Paternayan)
672 yd/lb (1,356 m/kg); 4, 6, 8



Tapestry Wool (DMC), 650 yd/lb
(1,314 m/kg); 6, 8, 10



Wool singles (Manos del Uruguay)
630 yd/lb (1,270 m/kg); 6, 8, 10



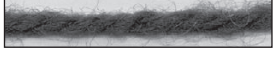
85% wool, 15% alpaca singles
(Berkshire); 643 yd/lb (1,300
m/kg); 4, 6, 8



Wool singles (Wool Classica)
631 yd/lb (1,300 m/kg); 8, 10, 12



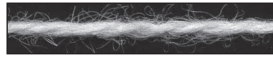
2-ply worsted-weight karakul;
600 yd/lb (1,210 m/kg); 6, 8, 10



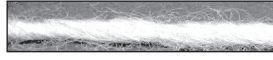
3-ply rug wool; 578 yd/lb
(1,160 m/kg); 6, 8, 10



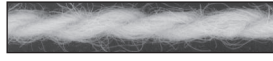
85% wool, 15% mohair (Lamb's
Pride Bulky); 570 yd/lb (1,150
m/kg); 4, 6, 8



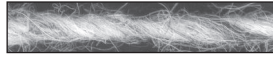
2.2/2 rug wool; 550 yd/lb
(1,110 m/kg); 8, 10, 12



Wool singles (Iceland); 495 yd/lb
(998 m/kg); 4, 6, 8



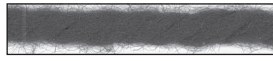
2-ply rug wool; 480 yd/lb
(970 m/kg)



Wool singles (Geo, Halcyon)
470 yd/lb (948 m/kg)



3-ply rug wool (Deco); 460 yd/lb
(926 m/kg); 4, 6, 8



100% wool (Nature Spun Chunky)
354 yd/lb (686 m/kg); 4, 6, 8



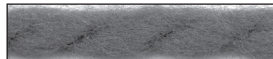
16-strand merino (Chunky Merino)
450 yd/lb (872 m/kg); 4, 6, 8



3-ply wool rug yarn; 260 yd/lb
(525 m/kg); 2, 4, 5



18/3 rug wool; 330 yd/lb (665 m/kg)



Merino wool (Tahki Baby Yarn)
274 yd/lb (552 m/kg); 2, 4, 6



3-ply rug wool; 260 yd/lb (525 m/kg)

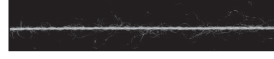


Wool/alpaca blend (Blue Sky Bulky)
205 yd/lb (45 yd/100 g)

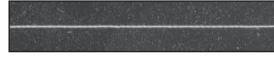


95% wool, 5% acrylic (Circus,
Artful Yarns); 93 yd/100 g

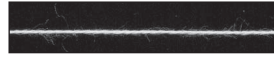
SILK and SILK BLENDS



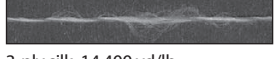
140/2 silk; 35,000 yd/lb
(70,630 m/kg); 56, 72, 90



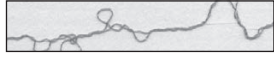
Undegummed silk; 15,000 yd/lb
(30,270 m/kg); 40, 45, 60



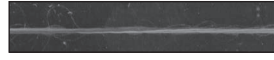
60/2 silk; 14,880 yd/lb
(30,028 m/kg); 40, 45, 60



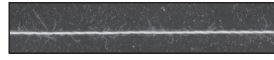
3-ply silk; 14,400 yd/lb
(29,059 m/kg); 40, 45, 60



Silk elastic (use with other warp yarns
only); 13,600 yd/lb (27,445 m/kg)



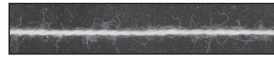
4-strand unspun silk
10,000 yd/lb (20,180 m/kg)



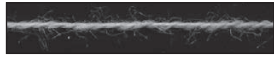
20/1 silk (70% silk, stainless steel
core); 9,600 yd/lb (18,600 m/kg)
12, 24, 40



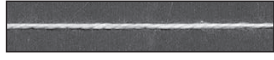
140/2/4 silk; 7,950 yd/lb
(16,050 m/kg); 24, 32, 40



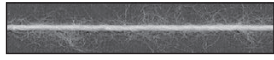
30/2 silk; 7,850 yd/lb
(15,840 m/kg); 24, 32, 40



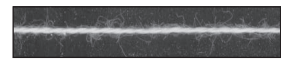
30/2 muga (wild) silk; 6,800 yd/lb
(13,720 m/kg); 24, 32, 40



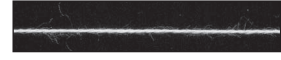
12/2 silk (Gemstone); 2,800 yd/lb
(5,650 m/kg); 12, 16, 18



Tussah silk (Honeyspun); 2,000 yd/lb
(4,040 m/kg); 12, 16, 18



#73 fine silk cord; 7,850 yd/lb
(15,840 m/kg); 24, 32, 40



60/2 silk; 15,000 yd/lb
(30,028 m/kg); 40, 50, 60



30/2 silk fris e boucl e; 7,440 yd/lb
(15,010 m/kg); 24, 32, 40



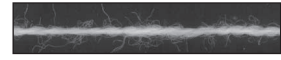
70% silk, 30% Seacell (Sea Silk)
7,440 yd/lb (15,010 m/kg); 24, 32, 40



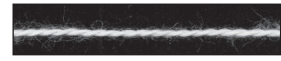
120/8 tussah silk; 6,100 yd/lb
(12,225 m/kg); 24, 30, 36



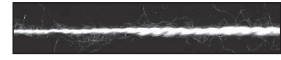
50% wool, 50% silk; 5,400 yd/lb
(10,890 m/kg); 20, 25, 30



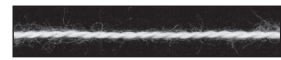
18/2 wool/silk; 5,040 yd/lb
(10,170 m/kg); 22, 26, 30



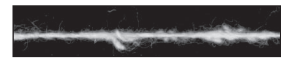
20/2 spun silk; 5,000 yd/lb
(10,100 m/kg); 22, 26, 30



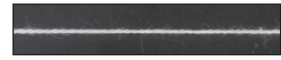
Uneven spun silk; 4,960 yd/lb
(10,000 m/kg); 22, 26, 30



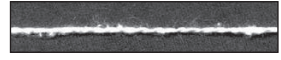
20/2 silk; 4,900 yd/lb
(9,880 m/kg); 22, 26, 30



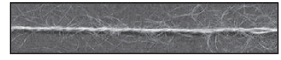
10/1 silk noil; 4,800 yd/lb
(9,686 m/kg); 22, 26, 30



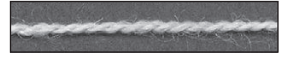
#6 fine silk cord; 4,650 yd/lb
(9,380 m/kg); 22, 26, 30



20/2 noil bombyx silk; 4,500 yd/lb
(9,020 m/kg); 22, 26, 30



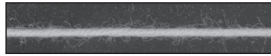
70% kid mohair, 30% silk (Kid Seta)
4,181 yd/lb (8,445 m/kg); 20, 24, 28



70% alpaca, 30% silk; 4,169 yd/lb
(8,420 m/kg); 20, 24, 28



15/2 tussah silk; 3,759 yd/lb (7,600 m/kg); 18, 20, 22



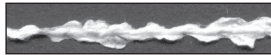
8-strand silk cord; 3,750 yd/lb (7,565 m/kg); 18, 20, 22



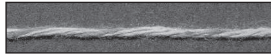
45% cashmere, 55% silk; 3,320 yd/lb (6,700 m/kg); 15, 18, 24



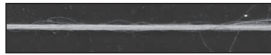
Fine silk cord; 3,100 yd/lb (6,250 m/kg); 15, 18, 20



6/1 mawata silk novelty; 2,960 yd/lb (5,967 m/kg); 10, 12, 15



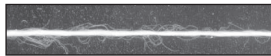
4-ply 75% rayon, 25% silk (Splash!); 2,800 yd/lb (5,650 m/kg); 15, 20, 24



100% silk floss (Alec Jackson Premium Japanese Silk Floss)



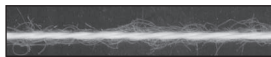
Silk frisé eyelash; 2,970 yd/lb (6,000 m/kg)



12/2 spun silk; 2,900 yd/lb (5,850 m/kg); 15, 18, 20



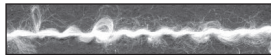
8/2 silk; 2,800 yd/lb (5,650 m/kg); 14, 18, 22



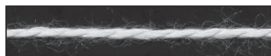
2-ply silk cord; 2,800 yd/lb (5,650 m/kg); 14, 18, 22



2-ply silk noil; 2,700 yd/lb (5,450 m/kg); 12, 15, 18



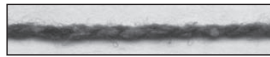
Viscose Sizing Fancy Silk; 2,480 yd/lb (5,000 m/kg); 12, 15, 18



2-ply Cascade silk; 2,000 yd/lb (4,040 m/kg); 12, 16, 18



5/2 silk; 1,188 yd/lb (2,390 m/kg); 30, 32, 34



45% wool, 35% silk, 20% nylon (Silky Wool); 1,750 yd/lb (3,530 m/kg); 10, 12, 15



65% merino, 30% silk, 5% nylon; 1,750 yd/lb (3,532 m/kg); 10, 12, 16



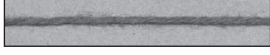
Silk bouclé (Tiara); 1,450 yd/lb (2,923 m/kg); 10, 12, 16



70% merino, 30% silk (Silk Blend); 1,370 yd/lb (2,780 m/kg)



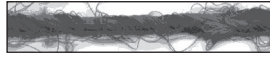
10-strand silk embroidery floss (Soie Cristale, Caron); 1,200 yd/lb (2,419 m/kg)



8/4 wool/silk; 1,120 yd/lb (2,258 m/kg); 10, 12, 15



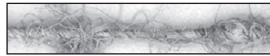
12-ply silk; 1,100 yd/lb (2,220 m/kg); 10, 14, 18



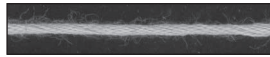
Recycled silk (Mango Moon); 400 yd/lb (782 m/kg)



Recycled silk; 270 yd/lb (544 m/kg)



Recycled silk knitting yarn (Himalaya); 80 yd (74 m)/hank



10-strand silk embroidery floss (Waterlilies, Caron)



Sari silk ribbon

LINEN



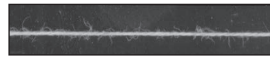
50/1 linen; 15,000 yd/lb (30,270 m/kg); 30, 40, 48



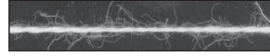
2-ply line linen (Linen 14); 7,000 yd/lb (14,030 m/kg); 24, 30, 36



48/2 line linen; 7,000 yd/lb (14,120 m/kg); 30, 32, 36



40/2 linen; 6,000 yd/lb (12,108 m/kg); 24, 30, 36



12/2 cot/lin (70% cotton, 30% linen); 5,040 yd/lb (10,170 m/kg); 20, 24, 30



16/1 linen; 4,800 yd/lb (9,686 m/kg); 20, 24, 28



35/2 Linen; 4,600 yd/lb (9,282 m/kg); 20, 24, 28



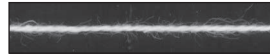
30/2 linen; 4,500 yd/lb (9,075 m/kg); 20, 24, 28



28/2 linen; 4,200 yd/lb (8,475 m/kg); 20, 24, 28



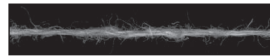
8/2 cottolin (50% cotton, 50% linen or 60% cotton, 40% linen); 3,360 yd/lb (1,397 m/kg); 15, 20, 24



22/2 cottolin (50% cotton, 50% linen or 60% cotton, 40% linen); 3,170–3,300 yd/lb (6,390 m/kg); 15, 20, 24



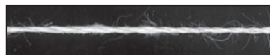
12/1 linen; 3,300 yd/lb (1,372 m/kg); 15, 20, 24



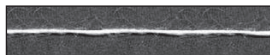
20/2 linen; 3,000 yd/lb (6,050 m/kg); 15, 20, 24



16/2 linen; 2,400 yd/lb (4,840 m/kg); 15, 20, 24



14/2 linen; 2,450 yd/lb (4,750 m/kg); 14, 18, 22



49% linen, 35% kid mohair, 16% nylon (KidLin); 2,270 yd/lb (4,550 m/kg); 10, 12, 18



5-ply linen (Texere); 2,250 yd/lb



Singles tow linen; 2,064 yd/lb (4,150 m/kg); 12, 16, 20



48/2/4 line linen; 1,750 yd/lb (3,530 m/kg); 12, 16, 20



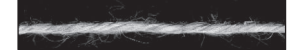
10/2 wet-spun linen; 1,600 yd/lb (3,228 m/kg); 12, 15, 18



10/2 linen; 1,500 yd/lb (3,025 m/kg); 12, 15, 18



30% linen, 70% organic cotton (Allegoro); 1,400 yd/lb (2,825 m/kg); 10, 12, 15



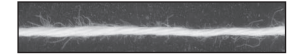
4-ply linen (Euroflax); 1,300 yd/lb (2,625 m/kg); 10, 14, 18



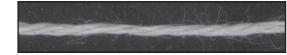
8/2 linen; 1,200 yd/lb (2,420 m/kg); 10, 14, 16



16/4 linen; 1,200 yd/lb (2,420 m/kg); 10, 14, 18



4-ply wet-spun linen; 1,200 yd/lb (2,420 m/kg); 10, 14, 18



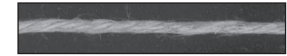
8/3 linen; 800 yd/lb (1,614 m/kg); 8, 10, 12



10/5 linen; 600 yd/lb (1,210 m/kg); 8, 10, 12



8/4 wet-spun linen; 600 yd/lb (1,210 m/kg); 8, 10, 12



8/5 linen; 480 yd/lb (968 m/kg); 6, 8, 10



8/6 wet-spun linen; 400 yd/lb (810 m/kg); 6, 8, 10

RAYON



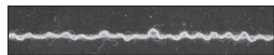
Machine embroidery thread; 22,000 yd/lb (44,400 m/kg)



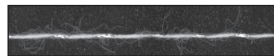
#40 rayon sewing thread; 13,000 yd/lb (26,234 m/kg); 40, 45, 60



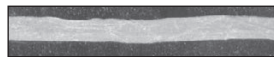
100% viscose (Makeup); 13,600 yd/lb (27,445 m/kg); 36, 48, 60



64% viscose, 36% Elite (Jump) 10,000 yd/lb (20,180 m/kg)



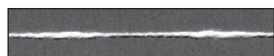
Rayon metallic; 6,300 yd/lb (13,104 m/kg); 24, 28, 32



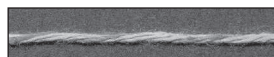
Viscose sizing paper; 4,480 yd/lb (9,040 m/kg)



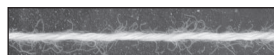
Rayon flake; 3,700 yd/lb (7,463 m/kg); 20, 24, 28



8/2 rayon flake; 3,360 yd/lb (6,780 m/kg); 16, 20, 24



4-ply 75% rayon, 25% silk (Splash!) 2,800 yd/lb (5,650 m/kg); 15, 20, 24



6-ply rayon; 2,500 yd/lb (5,045 m/kg); 12, 16, 20



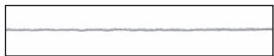
100% viscose (Marbella) 2,325 yd/lb (4,690 m/kg) 12, 16, 20



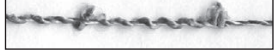
100% rayon (Susil); 2,300 yd/lb (4,640 m/kg); 12, 15, 18



Rayon novelty; 2,300 yd/lb (4,640 m/kg); 12, 15, 18



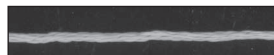
100% Viscose (Calais); 4,600 yd/lb (9,280 m/kg); 22, 26, 30



100% viscose (Skinny Majesty) 2,300 yd/lb (4,645 m/kg); 12, 15, 18



100% textured viscose (Raffia) 2,100 yd/lb (4,234 m/kg); 10, 12, 15



6-strand rayon floss; 2,100 yd/lb (4,238 m/kg); 12, 15, 18



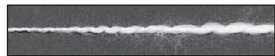
Rayon bouclé; 2,100 yd/lb (4,234 m/kg); 10, 12, 15



4-ply rayon; 2,100 yd/lb (4,238 m/kg); 12, 15, 18



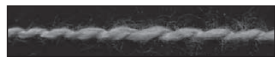
80% rayon, 20% metallized polyester; 1,980 yd/lb (3,525 m/kg)



Rayon Slub; 1,600 yd/lb (3,228 m/kg); 12, 16, 18



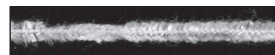
Lurex/rayon metallic (Chainette) 1,900 yd/lb (3,385 m/kg); 12, 15, 18



1.8/1 rayon slub; 1,680 yd/lb (3,390 m/kg); 12, 16, 18



100% viscose (Slinky); 1,600 yd/lb (3,225 m/kg); 12, 15, 18



Rayon chenille; 1,450 yd/lb (2,926 m/kg); 12, 15, 18



Rayon chenille; 1,300 yd/lb (2,620 m/kg); 12, 15, 18



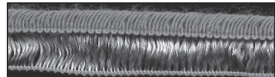
100% rayon (Rayon Ric Rac) 1,200 yd/lb (2,420 m/kg); 10, 15, 20



100% rayon metallic; 1,100 yd/lb (2,220 m/kg); 10, 15, 20



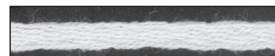
46% viscose, 34% polyamide, 20% linen (Merletto) 888 yd/lb (1,790 m/kg); 10, 12, 15



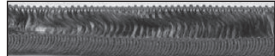
Rayon Ric Rac ribbon; 1,000 yd/lb



Rayon chenille (Chinchilla); 700 yd/lb (1,330 m/kg); 8, 10, 12



100% rayon knitting ribbon (Glacé, Berocco); 686 yd/lb (1,385 m/kg)

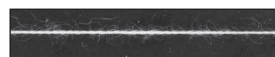


Colinette Giotto ribbon; 600 yd/lb

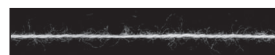


Heavy Rayon Chenille; 475 yd/lb (960 m/kg); 6, 8, 10

TENCEL



30/2 Tencel; 12,600 yd/lb (25,425 m/kg); 30, 40, 48



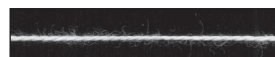
20/2 Tencel; 8,400 yd/lb (16,950 m/kg); 30, 36, 48



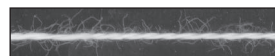
18/2 Tencel; 7,560 yd/lb (15,250 m/kg); 28, 32, 40



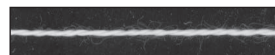
50% alpaca, 50% Tencel; 4,200 yd/lb (8,475 m/kg); 20, 24, 28



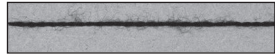
10/2 Tencel; 4,200 yd/lb (8,475 m/kg); 20, 24, 28



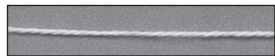
60% Tencel, 40% cotton; 4,200 yd/lb (8,475 m/kg); 20, 24, 28



8/2 Tencel; 3,360 yd/lb (6,780 m/kg); 16, 20, 24

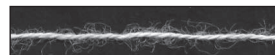


10/2 merino/Tencel (Colrain Lace); 2,800 yd/lb (5,645 m/kg); 15, 18, 20.



5/2 Tencel; 2,100 yd/lb (4,238 m/kg); 12, 16, 18

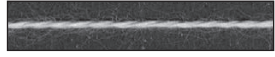
SOY, BAMBOO, etc.



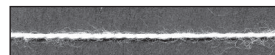
16/2 soy yarn (Soysilk); 6,400 yd/lb (12,895 m/kg); 20, 24, 36



100% bamboo (Bambu 12); 6,300 yd/lb (12,690 m/kg); 20, 30, 36



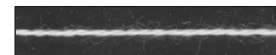
20/3 bamboo; 5,408 yd/lb (10,913 m/kg); 20, 24, 28



10/2 soy yarn (Soysilk); 4,300 yd/lb (8,660 m/kg); 20, 24, 28



10/2 bamboo; 4,200 yd/lb (8,475 m/kg); 20, 24, 28



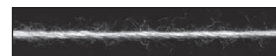
8/2 bamboo; 3,360 yd/lb (6,780 m/kg); 16, 20, 24



80% alpaca, 20% bamboo (Forever Lace); 3,000 yd/lb (6,042 m/kg); 15, 18, 20



52% bamboo, 43% Superwash merino, 5% silk; 3,000 yd/lb; 12, 15, 18



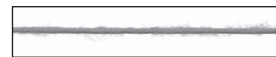
100% bamboo; 2,500 yd/lb (5,010 m/kg); 15, 18, 24



100% bamboo (Bambu 7) 2,100 yd/lb (4,210 m/kg); 12, 15, 18



100% hemp; 1,600 yd/lb (3,225 m/kg); 12, 15, 18



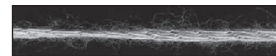
Satin bamboo; 1,050 yd/lb (2,120 m/kg); 10, 12, 14



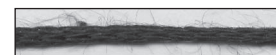
2-ply hemp (Lunatic Fringe); 4,000 yd/lb (8,071 m/kg); 20, 24, 28



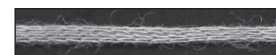
100% bamboo tape; 1,344 yd/lb



100% bamboo (Cleckheaton) 1,240 yd/lb (2,500 m/kg); 10, 12, 14



100% bamboo tubular yarn; 1,150 yd/lb (2,318 m/kg); 10, 12, 15



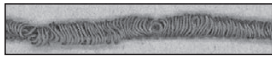
Soy fiber tubular yarn (Soysilk) 1,097 yd/lb (2,210 m/kg); 8, 10, 12



50% Superwash wool, 25% Soysilk 22 1/2% cotton, 2 1/2% chitin (TOFUtsies) 2,120 yd/lb (4,110 m/kg); 10, 14, 16



Pineapple singles (Fique) 1,300 yd/lb (2,625 m/kg)



Bambu Lace (92% bamboo, 8% nylon) 650 yd/lb (1,301 m/kg); 10, 12, 15

BLENDS and OTHER MISCELLANEOUS



Machine embroidery thread (59% polyester, 40% polyethylene, 1% metallic)



Nylon upholstery thread 150 yd (138 m)/spool



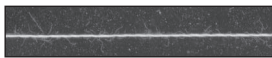
100% polyester serger thread; 15,000 yd/lb (30,240 m/kg); 36, 48, 60



Nymo nylon filament, size B



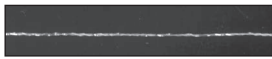
Nymo waxed nylon beading thread, size D



20/1 69% silk, 31% stainless; 9,840 yd/lb (19,857 m/kg); 30, 40, 48



Conductive thread (Numen Trace)



Single-strand metallic thread 8,000 yd/lb (16,140 m/kg)



30-gauge silver wire; 24, 30, 36



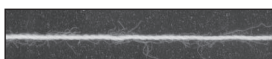
30-gauge coated copper wire



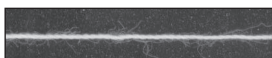
28-gauge copper wire; 18, 24, 30



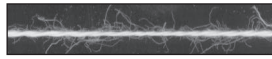
EL Wire; 1.2 mm; part #HPPA05 Angel Hair



Cotton/polyester sewing thread 6,000 yd/lb (12,480 m/kg)



Cotton/polyester sewing thread 4,700 yd/lb (9,485 m/kg)



12/2 cot/lin (70% cotton, 30% linen) 5,040 yd/lb (10,170 m/kg); 20, 24, 30



75% recycled cotton, 25% acrylic 825 yd/lb (1,664 m/kg)



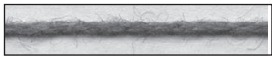
8/4 rug warp (50% cotton, 50% polyester); 1,600 yd/lb (3,390 m/kg); 10, 15, 18



Cotton/metallic cord; 750 yd/lb (1,455 m/kg); 4, 6, 8



11/2 hemp/cotton; 4,620 yd/lb (9,306 m/kg); 20, 24, 36



60% alpaca, 40% cotton (Serena) 4,200 yd/lb (8,475 m/kg); 20, 24, 28



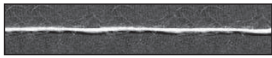
30% linen, 70% organic cotton; Allegoro 1,400 yd/lb (2,825 m/kg); 10, 12, 15



35% hemp, 35% cotton, 30% rayon 1,400 yd/lb (2,820 m/kg); 12, 15, 20



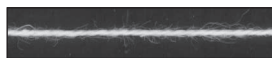
34% hemp, 41% cotton, 25% Modal (Hempathy); 1,390 yd/lb (2,700 m/kg); 10, 14, 16



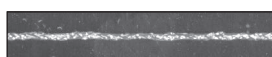
49% linen, 35% kid mohair, 16% nylon (KidLin); 2,270 yd/lb (4,550 m/kg); 10, 12, 18



60% Tencel, 40% cotton; 4,200 yd/lb (8,475 m/kg); 20, 24, 28



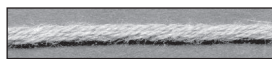
22/2 cottolin (50% cotton, 50% linen) 3,170 yd/lb (6,390 m/kg); 15, 20, 24



#8 fine metallic braid; 3,000 yd/lb



52% bamboo, 43% Superwash merino, 5% silk; 3,000 yd/lb; 12, 15, 18



80% cotton, 20% merino wool 975 yd/lb (1,965 m/kg); 6, 8, 10



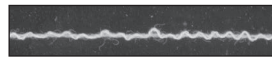
50% wool, 50% cotton; 644 yd/lb (1,225 m/kg); 4, 6, 8



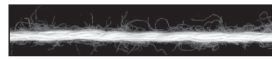
62% viscose, 38% cotton (Waikiki) 955 yd/lb (1,925 m/kg)



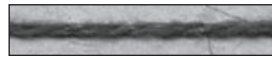
57% viscose, 22% linen, 21% acrylic (Damask); 1,045 yd/lb (2,105 m/kg)



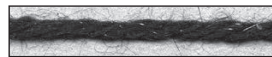
64% viscose, 36% elite; 10,000 yd/lb (20,180 m/kg); 45, 60, 75



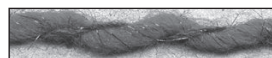
Viscose/Angelina (55% Lenpur, 38% viscose, 7% Angelina); 2,000 yd/lb (4,036 m/kg); 12, 16, 18



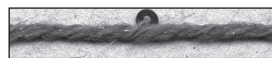
94% wool, 6% Angelina; 1,600 yd/lb (3,230 m/kg); 8, 10, 12



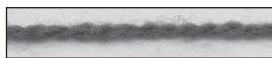
4-ply wool/Angelina; 1,200 yd/lb (2,425 m/kg); 6, 8, 10



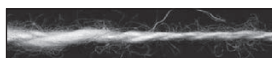
2-ply wool/Angelina bouclé (94% wool, 6% Angelina); 750 yd/lb (1,520 m/kg); 4, 6, 8



89% wool, 6% Angelina, 5% sequins 1,100 yd/lb (2,220 m/kg)



65% wool, 35% camel down 2,100 yd/lb (4,238 m/kg); 12, 15, 20



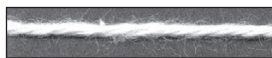
Rayon/cotton/flax slub; 1,800 yd/lb (3,630 m/kg); 12, 15, 18



65% merino, 30% silk, 5% nylon 1,750 yd/lb (3,532 m/kg); 10, 12, 16



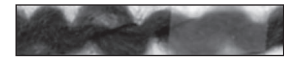
95% cotton, 5% blend (Riveting) 1,600 yd/lb (8,475 m/kg); 8, 12, 15



4-ply 75% yak down, 25% bamboo 1,440 yd/lb (2,906 m/kg); 6, 9, 12



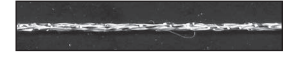
2-ply 50% buffalo, 50% alpaca (Lonesome Stone Natural Fiber Mill) 900 yd/lb (1,804 m/kg); 6, 8, 10



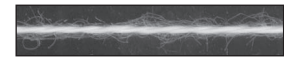
95% wool, 5% acrylic (Circus, Artful Yarns); 93 yd/100 g



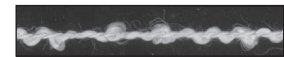
100% Lurex (Astra-Glow) 3,000 yd/lb (6,055 m/kg)



64% viscose, 36% polyester 680 yd/lb (200 yd/25 g ball)



71% rayon, 20% cotton; 950 yd/lb (1,900 m/kg); 10, 12, 15



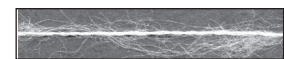
Rayon/wool bouclé; 2,100 yd/lb (4,238 m/kg); 12, 15, 18



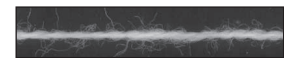
8/4 poly/cotton; 1,400 yd/lb (2,825 m/kg); 10, 14, 16



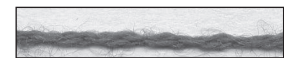
45% cotton, 40% wool, 15% nylon (Sockotta); 1,878 yd/lb (3,710 m/kg) 10, 15, 18



12/1 silk/mohair (80% mohair, 20% silk); 5,920 yd/lb (11,934 m/kg); 20, 24, 30



18/2 wool/silk; 5,040 yd/lb (10,170 m/kg); 22, 26, 30



14/2 alpaca/silk (80% alpaca, 20% silk) 3,472 yd/lb (7,000 m/kg); 15, 20, 24



44% polyamide, 29% cotton, 27% acrylic (Pompeii); 3,000 yd/lb (6,055 m/kg); 16, 20, 24



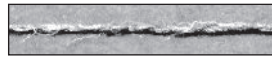
80% cotton, 20% silk (Lace Yarn) 8,100 yd/lb (16,344 m/kg) 425 yd/skein; 30, 36, 48



Silk/linen (80% silk, 20% linen)
2,144 yd/lb (4,322 m/kg); 12, 15, 18



47% rayon, 25% linen, 17% silk (Seduce)
1,150 yd/lb (2,320 m/kg); 10, 15, 20



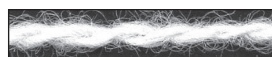
14/2 wool/alpaca; 3,920 yd/lb
(7,460 m/kg); 16, 20, 24



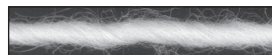
70% merino, 30% silk (Silk Blend)
1,370 yd/lb (2,780 m/kg)



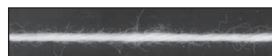
3-ply polyester rug yarn; 680 yd/lb
(1,370 m/kg); 4, 6, 8



2-ply wool blend (80% wool, 20% nylon)
1,000 yd/lb (2,018 m/kg); 8, 10, 12



85% wool, 15% mohair; 760 yd/lb
(1,533 m/kg); 6, 8, 10



8/2 acrylic (Orlec); 3,000 yd/lb
(6,055 m/kg); 16, 20, 24



6/2/2 acrylic; 1,340 yd/lb
(2,699 m/kg); 10, 12, 15



Siberian iris leaf



Paper, 400 yd/lb (805 m/kg); 6, 8, 10

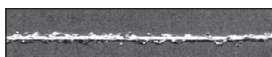
RIBBONS, BOUCLÉS, KNITTING NOVELTIES, METALLICS



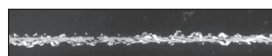
600-denier gimp (metallic); 7,500 yd/lb
(15,128 m/kg)



Viscose and metallized polyester,
Lumina; 4,000 yd/lb (8,100 m/kg)



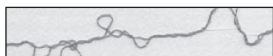
100% Lurex (Astra-Glow)
3,000 yd/lb (6,055 m/kg)



4-ply metallic (Frizette); 2,500 yd/lb
(5,050 m/kg); 12, 15, 18



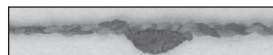
Lurex/rayon metallic (Chainette)
1,900 yd/lb (3,385 m/kg); 10, 12, 15



Silk elastic; 13,600 yd/lb (27,445 m/kg)



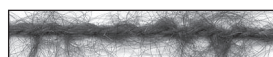
82% Nylon, 18% Lamé (24K); 187 yd
(203 m)/ 50 g ball; 8, 10, 12



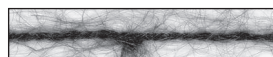
Cotton/rayon space-dyed yarn (Magic)



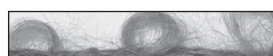
70% mohair, 30% nylon (Kid Mohair)
2,500 yd/lb (5,035 m/kg)



70% mohair, 25% viscose, 5% polyester
(Artful Yarns Portrait Mohair)
1,488 yd/lb (3,000 m/kg); 4, 6, 8



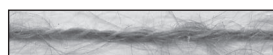
Mohair (Barrington Mohair); 1,000
yd/lb (2,015 m/kg); 8, 10, 12



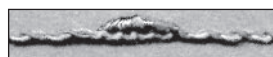
78% mohair, 13% wool, 9% nylon
992 yd/lb



75% polyamide, 25% polyester
(St. Tropez, Filatura Di Crosa)
1,042 yd/lb (1,928 m/kg)



78% mohair, 13% wool, 9% nylon
(Heather, Halcyon Yarn); 989 yd/lb
(1,975 m/kg); 4, 6, 8



75% rayon, 25% cotton bouclé
(Pazzaaz); 950 yd/lb (1,975 m/kg)
10, 12, 15



Cotton/rayon knitting novelty
(Ariel, Cherry Tree Hill); 950 yd/lb
(1,975 m/kg)



97% acrylic, 3% polyester bouclé
(Bernat); 800 yd/lb (1,614 m/kg);
8, 10, 12



Knitting novelty (Dazzle, Halcyon
Yarn); 82 yd (75 m)/25 g ball



50% cotton, 50% viscose ribbon
(Mikado); 112 yd/50 g



100% nylon ribbon (Eros, Plymouth
Yarn); 165 yd/50 g



100% cotton ribbon (Noro Wakaba)
72 yd/40 g



70% acrylic, 30% nylon ribbon
(Deco, Crystal Palace); 80 yd/50 g



100% viscose ribbon (Glacé,
Berocco); 75 yd/50 g



Nylon knitting novelty (Windsong,
Cherry Tree Hill); 165 yd (151 m)/ball



100% nylon knitting novelty (Eros,
Plymouth); 1,508 yd/lb (3,044 m/kg)



86% nylon, 10% rayon, 4% Lurex
(Eros Glitz, Plymouth); 575 yd/lb
(1,160 m/kg)



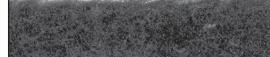
100% polyamid (Aquarius); 990 yd/lb
174 yd/50 g (2,000 m/kg); 8, 10, 12



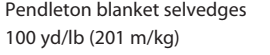
100% nylon (Furlauro)
732 yd/lb (1,475 m/kg)



Pendleton blanket selvages
100 yd/lb (201 m/kg)



Knitting novelty (Boa, Bernat)
61 yd (56 m)/50 g ball



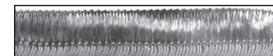
70% acrylic, 30% nylon ribbon (Deco
Variegated Ribbon); 80 yd (74 m)/50 g



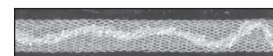
50% cotton, 40% nylon, 10% acrylic
(Luna Colors); 75 yd (69 m)/50 g



Nylon ribbon (Dolce, Trendsetter)
99 yd (91 m)/ 1.75 oz (1,500 m/kg)



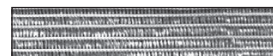
50% cotton, 50% nylon ribbon (Tarte-
lette, K1C2); 745 yd/lb (1,500 m/kg)



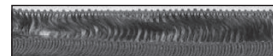
Novelty ribbon (Frosty Rays)
1,600 yd/lb (3,225 m/kg); 10, 12, 15



Rayon Ric Rac ribbon; 1,000 yd/lb
(2,018 m/kg); 10, 12, 16



Nylon ribbon (Incredible, Lion Yarns)
1,008 yd/lb (110 yd/50 g)



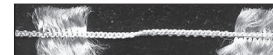
100% rayon ribbon (Colinette
Giotto); 600 yd/lb (1,210 m/kg)



100% nylon (Segue); 540 yd/lb (1,089
m/kg)



Polyamide ribbon (Fettuchina)
1,150 yd/lb (2,190 m/kg); 8, 10, 12



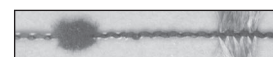
76% viscose, 24% polyester (Flora,
Trendsetter); 1,645 yd/lb (3,320 m/kg)



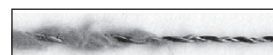
68% polyamide, 8% cotton, 10%
nylon, 10% viscose (Cancun, Stacy
Charles); 925 yd/lb (1,850 m/kg)



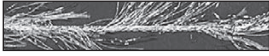
77% polyamide, 23% Tactel (Charm,
Trendsetters); 2,235 yd/lb (4,500 m/kg)



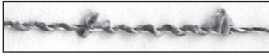
Knitting novelty (Charm, Trendsetter)
86 yd (79 m)/ball



Viscose/cotton (Avanti); 950 yd/lb
(1,918 m/kg); 10, 12, 15



78% polyester, 22% metallic novelty (Lamé by Brazilia); 753 yd/lb (1,520 m/kg)



100% viscose (Skinny Majesty) 2,300 yd/lb (4,645 m/kg); 12, 15, 18



Cotton/nylon ribbon (Cotton Gauze Ribbon); 1,300 yd/lb (2,625 m/kg)



100% polyester (Lazer FX) 70 yd (64 m)/10 g ball



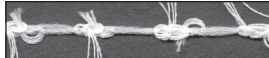
100% polyester (Fizz) 120 yd (110 m)/50 g ball



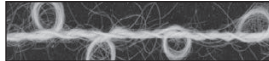
50% cotton, 25% rayon, 20% nylon, 5% metallic (Gypsy Magic Pizzazz) 122 yd (112 m)/168 g ball



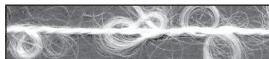
50% nylon, 50% polyester (Squiggle) 100 yd (92 m)/50 g ball



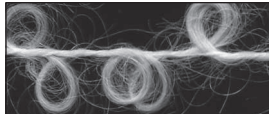
Polyester eyelash yarn (Fizz); 1,090 yd/lb (2,196 m/kg); 8, 10, 12



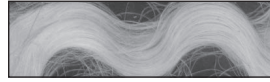
Mohair bouclé (70% mohair, 24% wool, 6% nylon; Victorian Bouclé) 1,173 yd/lb (2,370 m/kg) 6, 8, 10



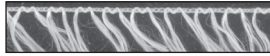
Mohair bouclé (78% mohair, 13% wool, 9% nylon; Stirling Mohair) 1,000 yd/lb (2,015 m/kg); 6, 8, 10



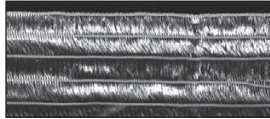
Mohair bouclé (95% mohair, 5% nylon) 550 yd/lb (1,110 m/kg)



Mohair locks for needlefelting



Silk eyelash (65% silk, 35% polyamide) binder; 3,100 yd/lb (6,256 m/kg) 12, 16, 18



Moda Vera knitting ribbon

NONYARN PLANT MATERIALS



African reed; used as accent weft in sheer curtain fabric



Bamboo skewer (weft only)



Siberian iris leaf