

Huck Cottolin Towels

Woven by Pattie Lamb for the Triangle Weavers Towel Exchange
October 2014

Pattern: Huck lace and plain weave. Source: Inspired by a 4-shaft sampler in “Huck Lace: The Best of Weavers”

Warp:

16/2 cottolin (60% organic cotton, 40% linen), 6700 yards/pound),
Bleached (color 101), Source: Yarn Barn of Kansas

613 ends, sett at 30 epi, 20.5” in the reed

Weft:

16/2 cottolin (60% organic cotton, 40% linen), 6700 yards/pound),
Periwinkle (color 5067), Bleached (color 101), Turquoise (color 1510),
Source: Yarn Barn of Kansas



Threading:

Start ↓

	21x		8x		18x	Walking Tieup								
		4 4		4 4		1	2	3	4	5	6	7	8	←Treadle #
			3 3			4	4		4	4				
	2	2		2 2 2		3		3		3	3			
	1	1 1 1			1 1 1			2	2	2	2			
						1	1	1	1					

↓ End

18x		8x			21x		28x	
	4 4		4 4			4 4		4 4
		3 3					3 3	
2		2 2 2		2	2		2 2 2	
1	1 1 1		1 1 1	1	1 1 1		1 1 1	

Weaving:

I planned for my towels to be 17.5" x 32" before hemming. The warp was 20.5" wide and I wove each towel to a length of 36 1/2" in length to allow for takeup and shrinkage. When calculating my total warp length, I allowed for loom waste and for an extra 1/2" in between each towel for waste when zigzagging them apart.

For each towel, I wove a 3 1/2" plain weave border on each end and a pattern area of approximately 29 1/2". I used the 8 treadle walking layout above, which was very comfortable to follow.

The beat varied depending on the color of the weft and the pattern of the towel but ranged between 24 and 28 ppi.

To finish the towels, I zigzagged at the end of each towel, cut the towels apart, and machine-washed and dried them. I then turned up the hem on each towel so the plain weave border was 2" deep, then turned under the hem again to leave a 5/8" hem. I mitered the corners and blind stitched the hems by hand.

I enjoyed working with this fine cottolin. I wove 6 towels, and I found that on the last towel, I started having some tension issues caused by the differential takeup in the plain weave and lace areas. If I do this again, I will cut them off after 3 towels and tie them on again to avoid this problem.

Towel 1 was woven with the periwinkle 16/2 cottolin weft.

The pattern I wove was the **Weft Spots Pattern** shown below, but after the towel was washed and dried I liked the warp float side better, so I hemmed the towel with the back side of the towel as the right side.

I wove the following sequence:

Plain weave border for 3 ½" (treadle # 4 & 5, ending with a 5)

Pattern area: 8 ½ repeats: treadle # (46464 53535) x 8, then 46464

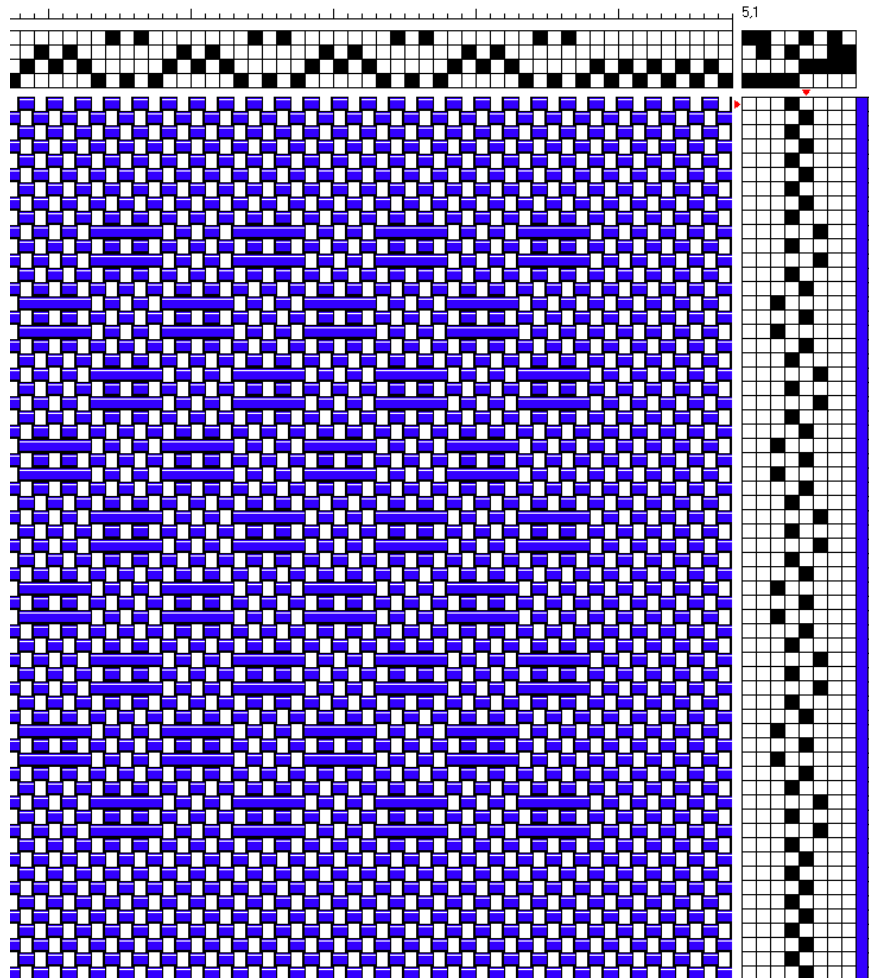
Plain weave: 41 shots of plain weave (treadle # 5 & 4, begin & end with a 5)

Pattern area until the towel measured approximately 29": [treadle # 46464 53535], finally ending with 46464

Plain weave: 41 shots of plain weave (treadle # 5 & 4, begin and end with a 5)

Pattern area: 8 ½ repeats: treadle # (46464 53535) x 8 then 46464

Plain weave border for 3 ½" (treadle # 5 & 4, beginning with a 5)



Towel 2 was woven with the bleached 16/2 cottolin weft.

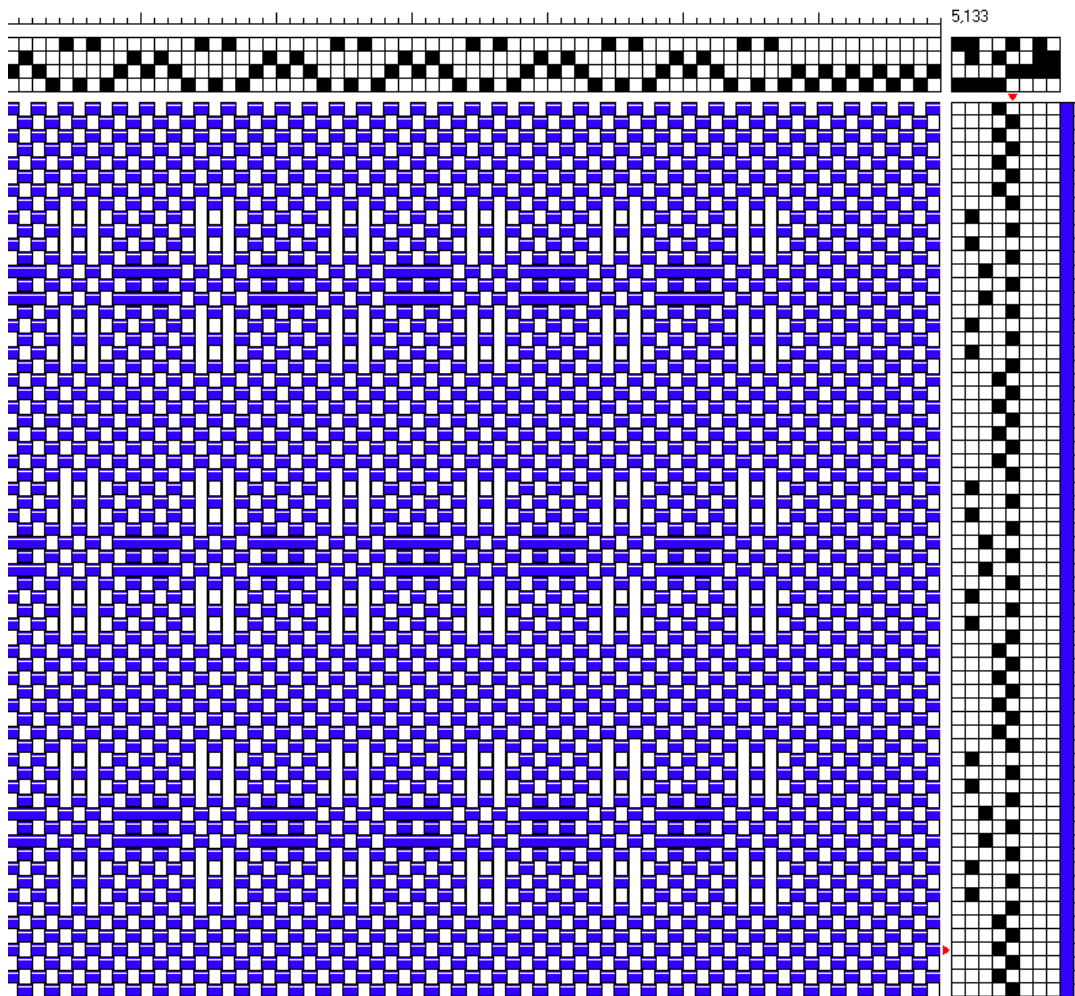
The pattern I wove was the **Bands of Spots Pattern** shown below.

I wove the following sequence:

Plain weave border for 3 ½" (treadle # 4 & 5, ending with a 5)

Pattern area until the towel measured approximately 33": [treadle # (252 53535 252), followed by 7 picks of plain weave 5454545], finally ending with 252 53535 252

Plain weave border for 3 ½" (treadle # 4 & 5, beginning with a 4)



Towel 3 was woven with the aqua 16/2 cottolin weft.

The pattern I wove was the **Lacy Huck Squares Pattern** shown below.

I wove the following sequence:

Plain weave border for 3 ½" (treadle # 4 & 5, ending with a 5)

Pattern area until the towel measured approximately 33": [treadle # 48484 52525], finally ending with 48484

Plain weave border for 3 ½" (treadle # 5 & 4, beginning with a 5)

